

2015/2016

()

8
-2 40

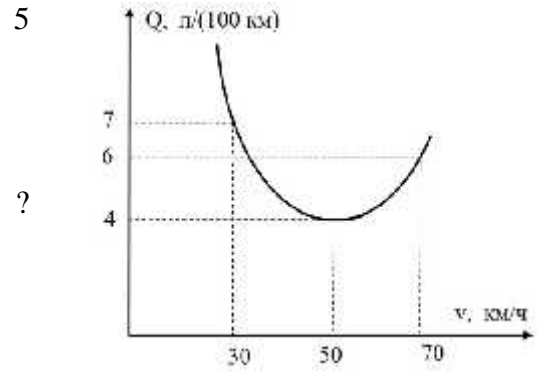
10

1

70 / , 50 / ,

(100) ,

30 / ,



10

2.

t = 1°C.
t ,
/(K),

0,5

$\rho_1 = 100$

$\rho_2 = 200$

?

$c = 4,2 \cdot 10^3$

3.

h = 39,8

?

13,6

10

4.

M

m

(.).

?
H,

L.

